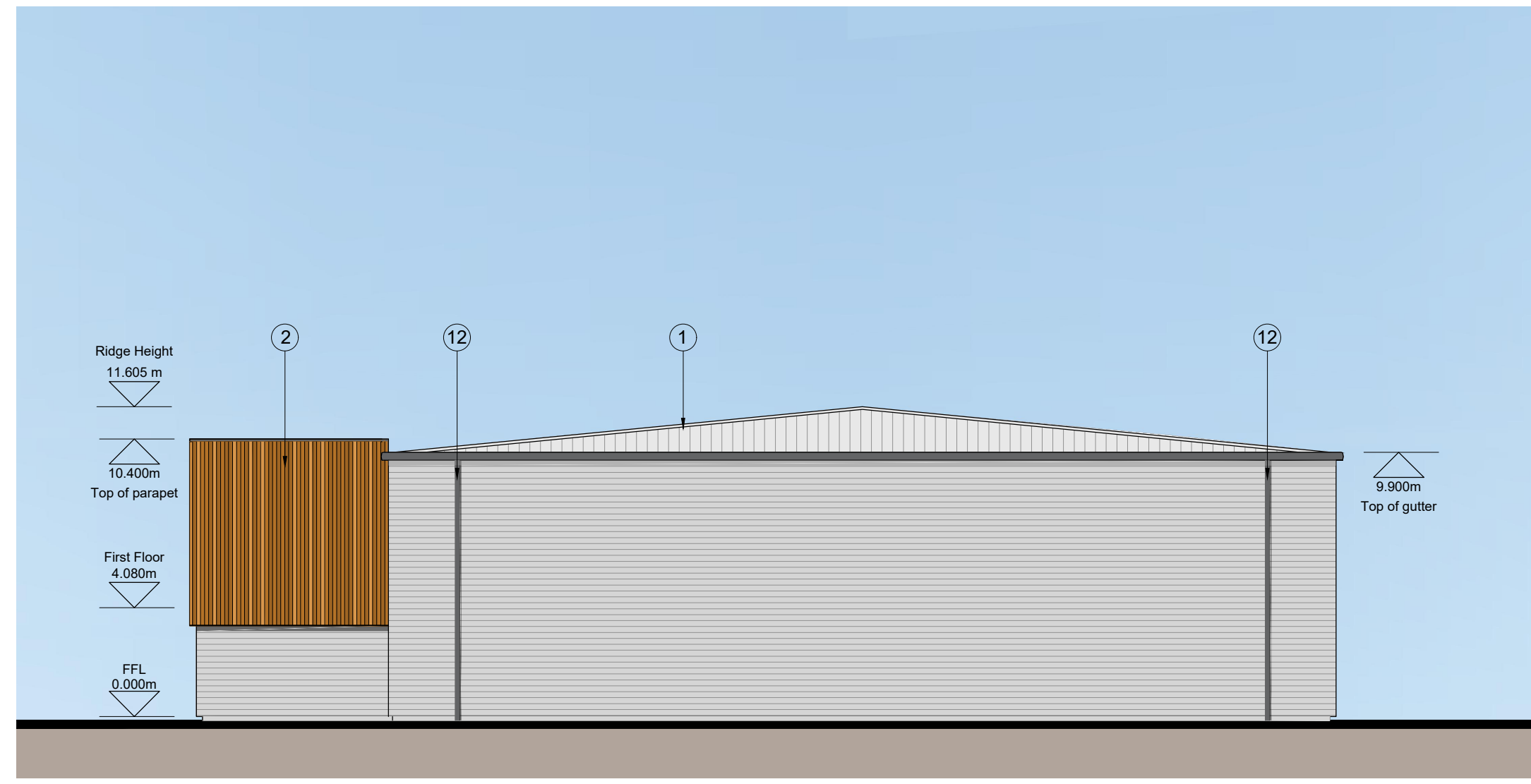


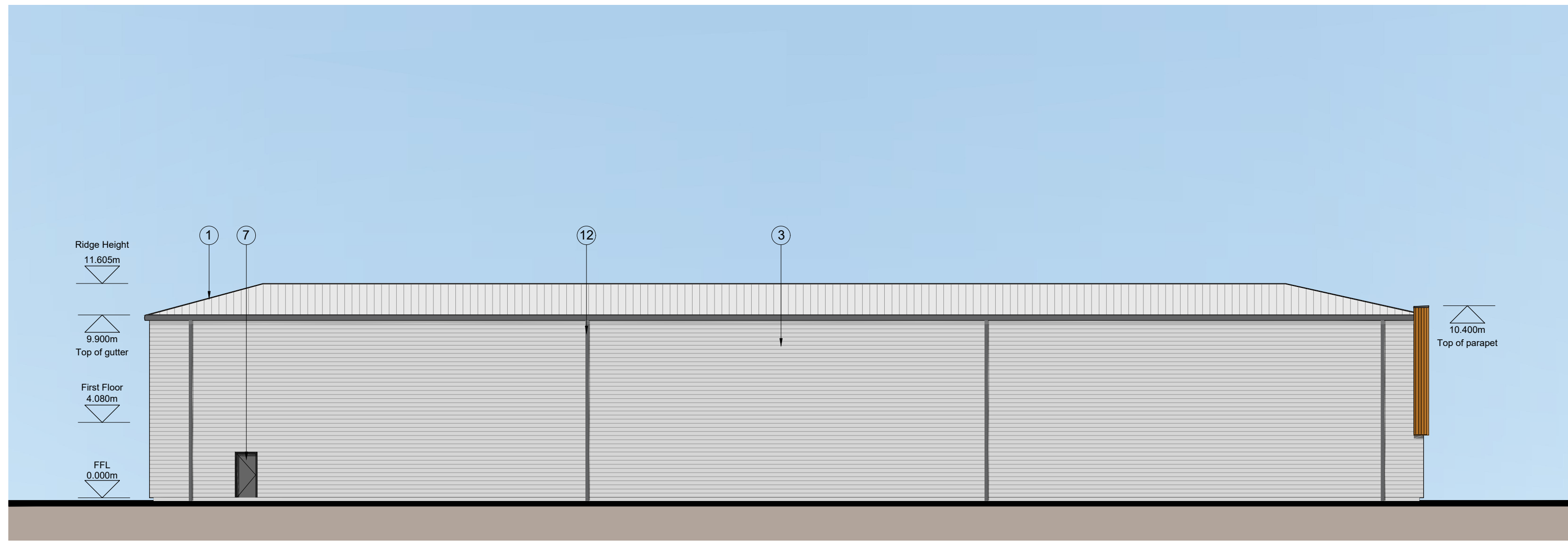
EASTERN ELEVATION



NORTHERN ELEVATION



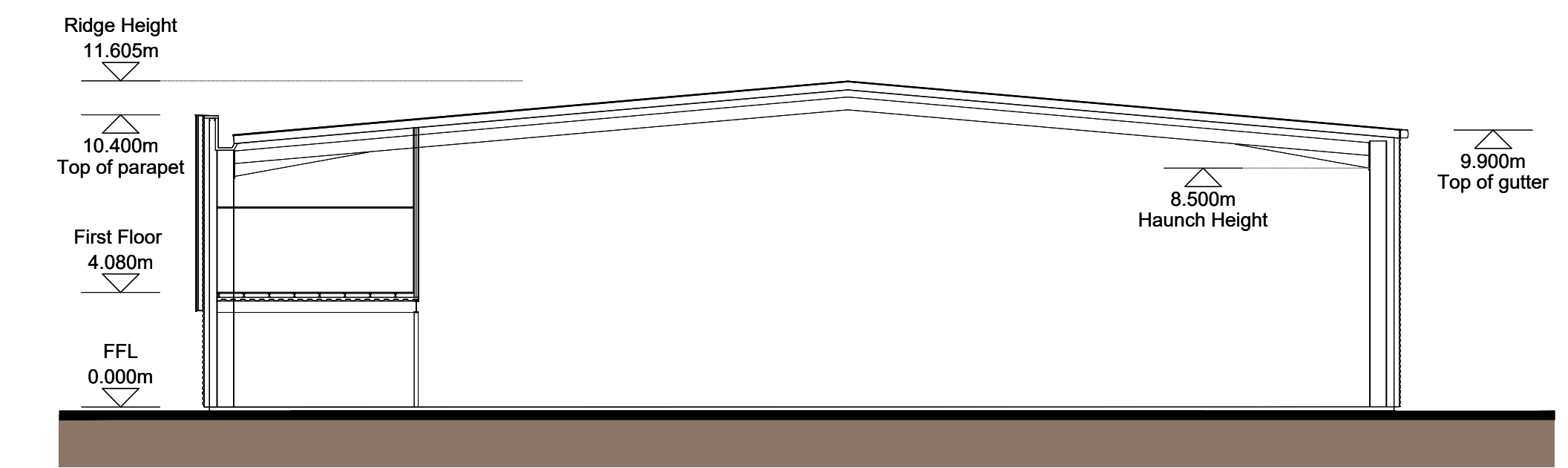
SOUTHERN ELEVATION



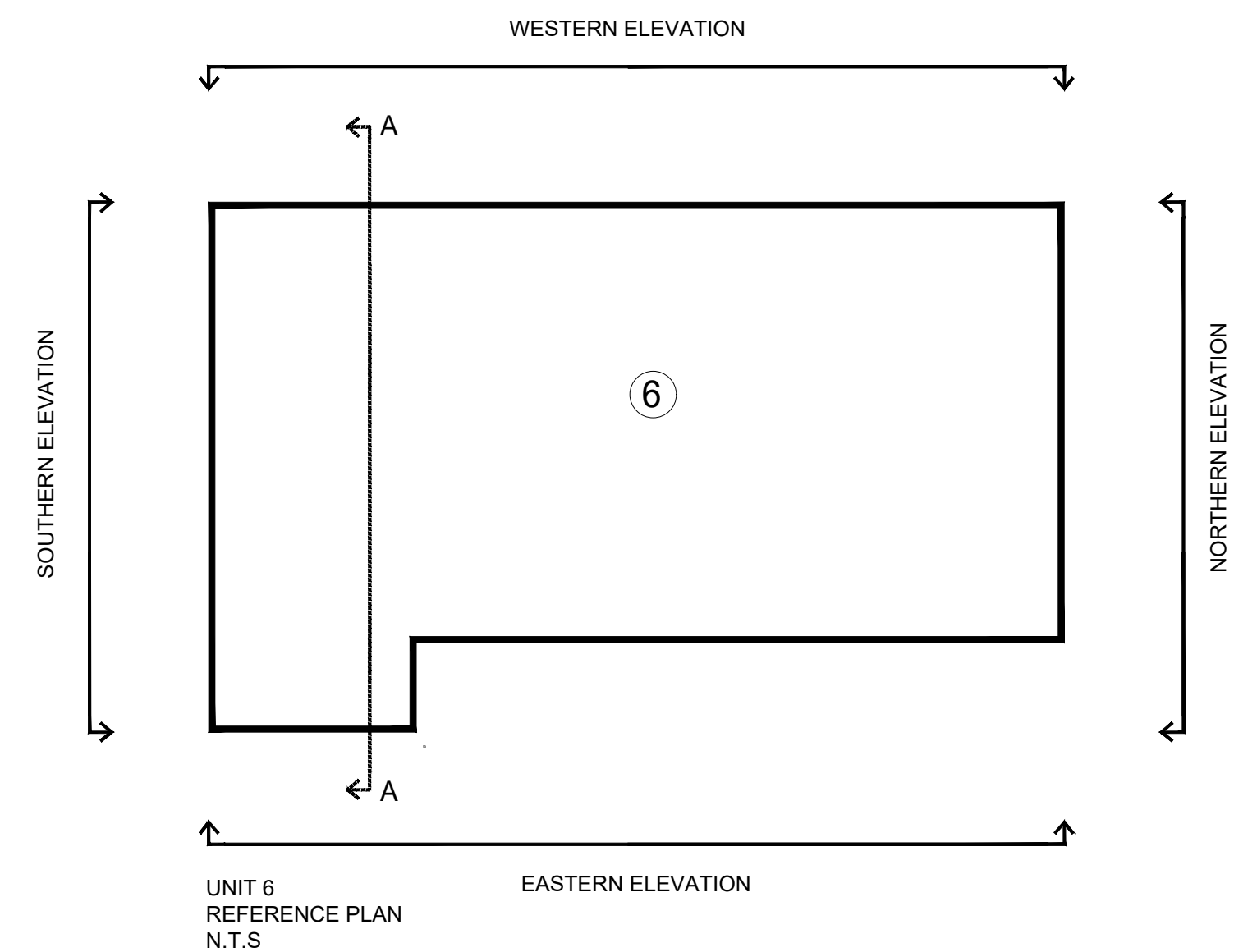
WESTERN ELEVATION

MATERIALS KEY

- ① PROFILED ROOF CLADDING (GOOSEWING GREY RAL 7038)
- ② SIBERIAN LARCH CLADDING
- ③ HORIZONTAL ARC PROFILE CLADDING (METALLIC SILVER RAL 9006)
- ④ ALUMINIUM FRAMED WINDOWS (ANTHRACITE RAL 7016)
- ⑤ ALUMINIUM FRAMED ENTRANCE DOORS AND FULL HEIGHT GLAZING (ANTHRACITE RAL 7016)
- ⑥ LOADING BAY DOORS (ANTHRACITE RAL 7016)
- ⑦ STEEL PERSONNEL DOORS (ANTHRACITE RAL 7016)
- ⑧ STEEL BOLLARD (GREEN RAL 6018)
- ⑨ MAIN ENTRANCE BRISE-SOLEIL
- ⑩ SIGNAGE ZONE, INDICATIVE
- ⑪ BACKLIT ILLUMINATED ALUMINIUM UNIT NUMERAL (RAL 6018 FACE)
- ⑫ ALUMINIUM RAINWATER GOODS (ANTHRACITE RAL 7016)



UNIT 6 SECTION AA



UNIT 6 REFERENCE PLAN N.T.S

Client: HE2 READING 1 GP LTD (LONDON)



Project: HEADLEY ROAD EAST WOODLEY

12 Warren Yard, Warren Park, Milton Keynes, MK12 5HW 01908 305 246

info@prc-group.com www.prc-group.com

Drawing Title: UNIT 6 PROPOSED ELEVATIONS & SECTION

Scale @ A1: 1:200 Checked by: JR Date: SEPT 21

Job No: 11359 Stage: PL 121 Drawing No: Rev:

Issue Status: Construction Preliminary Information Approval Tender

Offices: Working London Milton Keynes Warsaw

This page is intentionally left blank